



# International Executive Programme on Sustainable Sourcing & Trade

Edition 2025

25th February to 28th March

Online & Field Visit



# ABOUT THE PROGRAMME

---

The International Executive Programme (IEP) on Sustainable Sourcing & Trade is organised by the International Trade Centre (ITC) in partnership with SAI Platform (Sustainable Agriculture Initiative Platform). The programme is developed in collaboration with a network of leading academic institutions in the field of sustainable agriculture and global value chains.

This year the academic partners and contributors include:

- The Chartered Institute of Export & International Trade, The United Kingdom (IOE&IT)
- Bern University of Applied Sciences, School of Agricultural, Forest and Food Sciences, Switzerland (BHF-HAFL)

Following yet another successful edition of the International Executive Programme in 2023, which brought together 35 professionals from around the world, we continue to offer an engaging programme for professionals across the food industry to tackle different aspects of sustainability.

The topics of the IEP 2025 include:

- **Megatrends** impacting supply chains globally
- **Nature positive economy & sustainable trade** towards carbon-neutral and climate-resilient agri-food systems
- **Sustainability regulation** and market requirements
- **Tools & methodologies** to improve sustainable management of agriculture supply chains
- **Use of comparable data** to demonstrate impact of sustainability measures across supply chains in order to meet ESG requirements
- **Regenerative Agriculture & Sustainable Agricultural Practices** from theory to practice: learning from the field

---

# WHY ATTEND THE IEP 2025

This course offers **heads of sustainability, procurement executives, strategy and brand marketing professionals** a practical set of tools to:

- Identify sustainability risks and opportunities within global value chains.
- Integrate sustainability with corporate agendas and personal development.
- Learn from and network with the experts and leading sustainability practitioners.

# OVERVIEW: 2025 PROGRAMME

	Topic	Lead Organization	FULL	ONLINE
<b>Session 1</b> <i>(Online)</i>	Megatrends in Sustainability	International Trade Centre		
<b>Session 2</b> <i>(Online)</i>	Sustainability Regulations Reshaping the Agri-food Global Value Chains	International Trade Centre		
<b>Session 3</b> <i>(Online)</i>	Sustainability Data Governance through ESG Compliance	The Chartered Institute of Export & International Trade		
<b>Session 4</b> <i>(In-person)</i>	<b>Field Visit:</b> Sustainable Agriculture Practices & Regenerative Agriculture	Bern University of Applied Sciences, School of Agricultural, Forest and Food Sciences		

## FEES AND APPLICATIONS

**I) FULL PROGRAMME** (including participation in the field visit in Zollikofen, Switzerland)\*:

SAI Platform members	<b>€750</b>
General fee	<b>€900</b>

\*Seats for the field trip are limited

\*\*Participants are expected to arrange and cover the cost of travel and accommodation for the trip

**II) ONLINE PROGRAMME ONLY** (excluding participation in the field visit):

SAI Platform members	<b>€500</b>
General fee	<b>€650</b>

## CERTIFICATE

Participants will receive a certificate from ITC and SAI Platform upon completion of minimum three sessions, active participation and the submission of a final project assignment supported by a leading mentor.

# DATES AND ACTIVITIES

---

FEBRUARY 2025

Tuesday 25<sup>th</sup> | 15:00 to 16:00 PM CET: **Welcome & Introduction**

MARCH 2025

Tuesday 4<sup>th</sup> | 13:00 to 16:00 PM CET: **Session 1 | Megatrends in Sustainability**

Friday 7<sup>th</sup> | 16:00 to 17:00 PM CET : **Peer Learning Groups meetings**

Tuesday 11<sup>th</sup> | 13:00 to 16:00 PM CET: **Session 2 | Sustainability Regulations  
Reshaping the Agri-food Global Value Chains**

Friday 14<sup>th</sup> | 16:00 to 17:00 PM CET : **Peer Learning Groups meetings**

Tuesday 18<sup>th</sup> | 13:00 to 16:00 PM CET: **Session 3 | Sustainability Data  
Governance through ESG compliance**

Friday 21<sup>st</sup> | 16:00 to 17:00 PM CET : **Peer Learning Groups meetings**

Monday 24<sup>th</sup> | **Field visit – Sustainable Agriculture Practices and Regenerative  
Agriculture | Zollikofen, Switzerland**

Friday 28<sup>th</sup> | 15:00 to 16:00 PM CET: **Closing session**

## PEER LEARNING GROUP (PLG)

---

As part of the International Executive Programme offering, enrolled participants can take part in the Peer Learning Groups (PLG) activity. The purpose of this activity is to help participants **focus on one specific topic under the modules' themes** and to apply the concepts to their own organizations' contexts. Each PLG is **led by a dedicated coach** who will act as facilitator and provide the methodology to guide the participants throughout the analysis of the specific topic.

Participation in this activity is optional, and students are expected to dedicate approximately two hours per week to activities related to their Peer Learning Groups.

# PROGRAMME

## LIVE SESSIONS

---

### SESSION 1 | MEGATRENDS IN SUSTAINABILITY

Tuesday 4<sup>th</sup> March, 13:00-16:00 PM CET

In times of uncertainty, the sustainability agenda continues to take a central position on the global stage. Planetary limits are visible even to the sceptics and the calls to scale up measures to keep temperature from rising are being heard from all sectors of society, especially younger generations. Loss of biodiversity and deforestation challenges are an ever-increasing concern for the agri-food industry. Systemic inequalities in income, wealth, employment, and access to healthcare have been at the centre of mass demonstrations around the world. Human rights and child labour also remain major issues in supply chains. Still, amid this bleak context, there are also signs of increased momentum towards a nature positive and socially relevant agenda.

This session will focus on the relevant sustainability trends from around the world that transform “business as usual”. Sustainability practitioners and experts will share their provocative reflections on these megatrends.

#### Format & Structure

- This session will be conducted online
- Participant will receive pre-readings & case studies
- Panel discussion of experts will be followed by break-out rooms
- Q&A

#### Meet the lead faculty:



**Gabriela Alvarez, Co-founder, Colcocoa - Hacienda La Tentación & Plan T, Colombia**

Dr. Gabriela Alvarez is an advisor and contributor to International Trade Centre’s initiatives. She is currently Chair of the Trade for Sustainable Development’s Advisory Group and contributor to the International Executive Programme in Sustainable Sourcing. She teaches Strategy at the Executive MBA of University of Lausanne and the Ecole de Management de Lyon.

Gabriela is also an entrepreneur as a founder or cofounder in Colcocoa, Hacienda La Tentación, No Name Chocolate and PlanT. The linked ventures in cocoa and reforestation seek the transformation of cocoa farming towards a thriving and sustainable prosperity agroforestry model.

Gabriela holds a Doctorate in Management from Cranfield University (England), an MBA degree from The Wharton School, an MA in International Studies from the University of Pennsylvania (USA) and an Economics degree from the University of Buenos Aires.

# PROGRAMME

## LIVE SESSIONS

---

### SESSION 2 | SUSTAINABILITY REGULATIONS RESHAPING THE AGRI-FOOD GLOBAL VALUE CHAINS

Tuesday 11<sup>th</sup> March, 13:00-16:00 PM CET

Regulation is an important driver of transformational change. Policymakers around the world are gearing up to make businesses more accountable for their sustainability commitments. One of the largest sustainability initiatives is the EU's Green Deal. It is a comprehensive policy framework aimed at reducing greenhouse gas emissions, increasing energy efficiency, and promoting circular economy practices. The Green Deal consists of various regulations including the latest regulation on Deforestation-free products (EUDR) and the Corporate Sustainability Due Diligence Directive (CSDDD). Such regulations are being implemented all around the world and not just in the EU. However, regulation is not the only tool. Over recent decades, voluntary sustainability standards have been the tools to monitor sustainability across the global value chains and the role of sustainability standards continues to evolve.

In this session, we will look at how regulations and voluntary standards will reshape agribusiness. How is the agri-food industry reacting to these regulatory and market requirements? We will explore the implications of the regulations, and the type of guidance required to navigate the complexity of legislations and ease the burden of compliance.

#### Format & Structure

- This session will be conducted online
- Participant will receive pre-readings & case studies
- Panel discussion of experts will be followed by break-out rooms
- Q&A

#### Meet the lead faculty:



#### **Mathieu Lamolle, Senior Advisor Sustainable Global Value Chains, ITC, Switzerland**

Mathieu Lamolle has over 15 years of experience in international trade, market access and sustainable development issues. He holds a Master's degree in International Economics and Management from the Solvay Brussels School of Economics and Management (SBS) and speaks fluently English, French and Spanish.

Mathieu works at the International Trade Centre (ITC) as Senior Advisor, Sustainable Global Value Chains. He leads ITC's work on sustainability standards and multi-stakeholder initiatives, and he leads ITC's work on deforestation-free global value chains. He is also ITC focal point for MSME technical assistance in the context of the new EU Deforestation-free products Regulation (EUDR).

Mathieu coordinates partnerships with private industry groups, companies and civil society organizations and he delivers high-level keynote contributions to sustainability global events, he also delivers technical assistance and advisory services to MSMEs to develop sustainable business strategies, helping companies to integrate sustainability in their supply chains and access international markets.

# PROGRAMME

## LIVE SESSIONS

---

### SESSION 3 | SUSTAINABILITY DATA GOVERNANCE THROUGH ESG COMPLIANCE

Tuesday 18<sup>th</sup> March, 13:00-16:00 PM CET

'ESG' is high on the radar of C-suite discussions with the requirements for disclosure as demanding as those for financial disclosure. This demand is driven by investors, regulators, customers, consumers, civil society etc. But these ever-increasing demands are putting increasing pressure on farmers. How can costs be borne in an equitable way? Are expectations from consumers unrealistic and how should they be managed by food companies across the value chain?

This session will explore the vital role of supply chain relationships in achieving Environmental, Social, and Governance (ESG) compliance. Attendees will gain insights into how these relationships enable accurate ESG data collection, support transparency, mitigate risks, and uphold ethical standards. The session will emphasize key areas such as data traceability, sustainable supply chain management, and compliance, highlighting how these efforts contribute to a company's long-term success.

Participants will also learn practical strategies for integrating sustainable practices at each stage of the supply chain in an equitable way, and how to create reliable, auditable data, essential for building consumer trust and distinguishing products in a competitive marketplace.

#### Meet the lead faculty:



**Sandra Cooper, Trade and Customs Specialist, The Chartered Institute of Export & International Trade**

Sandra Cooper is a trade and customs specialist at the Chartered Institute of Export & International Trade, supporting businesses with guidance and training to increase their growth and international presence. Previously, she worked as an international trade adviser at the then-Department for International Trade in the North West of England. She has also acted as DIT's business specialist for Latin America and led the agri-tech and automotive sectors in the region.

With over 20 years' experience in the international trade field, Cooper has worked with companies in the UK and Mexico, successfully developing their global distribution networks and achieving exponential export growth. She also has a degree in international business, specialising in agriculture, from Monterrey Institute of Technology and Higher Education.

# PROGRAMME

## LIVE SESSIONS

---

### SESSION 4 | FIELD TRIP: SUSTAINABLE AGRICULTURE PRACTICES & REGENERATIVE AGRICULTURE

Monday 24<sup>th</sup> March, 09:00-17:15 PM CET

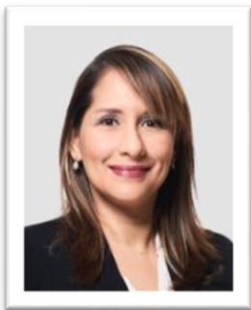
Sustainable agricultural production is key to address the ecological, economical, and social challenges caused due to expansion and intensification of agricultural production. As per the Food and Agriculture Organizations of the United Nations (FAO) sustainable food and agriculture is one in which food is nutritious and accessible for everyone, and where natural resources are managed in a way that maintains ecosystem functions to support current, as well as future human needs. Yet “sustainable agriculture” is no magic wand, it comes with its own challenges such as food security, land demand, energy, costs, etc. There is also a resurgence of “regenerative agriculture” which is a holistic framework that aims to continuously restore soil health, increase biodiversity, and create more resilient ecosystems while increasing productivity.

To understand these nuances, it is important to get first-hand perspective from the farmers and experts who are implementing these innovative sustainable farming techniques. In this session, we will visit the crop farms and dairy farms neighbouring Bern, Switzerland to meet the experts who will share with us their experiences about the opportunities and challenges vis-à-vis sustainable agriculture and regenerative agriculture practices.

#### What will you learn?

- What is Sustainable Agriculture? What is regenerative agriculture?
- How is agricultural performance is assessed against sustainability metrics?
- Practical knowledge through farm visits implementing sustainable agricultural practices
- What are the challenges farmers face in making the transition?

#### Meet the lead faculty:



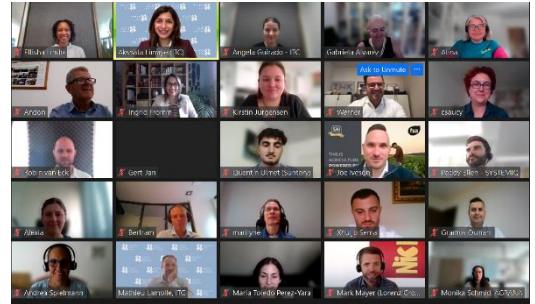
**Dr Ingrid Fromm, Research Associate and Lecturer in International Agriculture, Bern University of Applied Sciences, School of Agricultural, Forest and Food Sciences**

Dr Ingrid Fromm is a senior research associate and lecturer in international agriculture at the Bern University of Applied Sciences, School of Agricultural, Forest and Food Sciences, in Zollikofen Switzerland where she teaches in the Bachelor and Master’s programs. Her work focuses on global value chains and their impact on economic, environmental, and social development. For the past 20 years, Dr Fromm has focused on value chain research in multi-country trade commodities such as coffee, cocoa, banana and palm oil as well as fresh vegetables and pulses. She has conducted research and consultancies in numerous developing countries in Latin America, West Africa, and Asia.



# PREVIOUS EDITIONS 2019 to 2023

The first edition of the International Executive Programme took place in November 2019, combining online lecturing and on-site activities in Brazil and Italy. This pilot edition included a half-day field visit to offer on the ground insights into sustainability practices. The 2020 and 2021 editions were hosted fully online and brought together 155 professionals from backgrounds ranging from sustainability and procurement to marketing and branding.



The 2023 edition combined online learning with an optional on-site field visit to two regenerative agriculture farms in Portugal. Speakers included: Jason Clay, WFF; Florencia Sarmiento, IISD; U. R. Unnithan, Co-Founder & CEO, DIBIZ; and Dr. Pascal Boivin, Professor, HES Geneva, amongst many others. The course also consisted of Peer Learning Groups (PLG), where participants had the opportunity to take a deep dive into a specific sub-theme related to the topics of the four sessions relevant to their work.



“

I really enjoyed this program. It was great to hear directly from people doing policy work in this space as well as to hear from my peers on what challenges they are facing inside their organizations

Participant IEP 2023 from  
Canada

“

The participation in the IEP Program this year has been a fantastic experience for me, it has helped me to better understand the megatrends we are facing globally and locally.

Participant IEP 2023 from  
Albania

For more information about the International Executive Programme, please contact:

**Mathieu Lamolle, ITC | [lamolle@intracen.org](mailto:lamolle@intracen.org)**  
**Akshata Limaye, ITC | [alimaye@intracen.org](mailto:alimaye@intracen.org)**